



## Annunciator Panel Easy Label A-4400 Series



**Description:** Cornell's A-4400 Series Annunciator panels allow at a glance indication of patient/room/station status.

**Options:** Cornell's A-4400 Series Annunciator panels are very customizable:

- Ability to display 8, 12, 16, 24, or 48 rooms/zones with LEDs.
- Choice of red, amber, green, or blue LEDs
- Room labels are customizable with included software
- Choice of German Silver (shown), Silver, or Gold frame color (see back)
- Adjustable Tone Volume on the back of the panel

**Operation:** When used with a Cornell system, panel permits monitoring of individual zones.

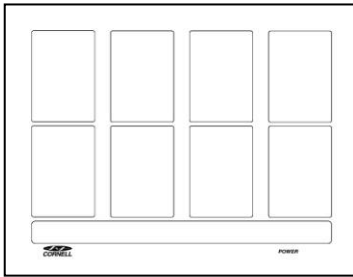
**Mounting:** Panel mounted on narrow depth surface mountable frame. Mounting kit included.

**Engineering Specifications:** The contractor shall furnish and install the Cornell A-4400 Series Annunciator Panels as shown on the plans. Each narrow depth surface mountable panel shall accommodate from 8 to 48 zones per panel. Multiple panels may be used for larger facilities. Indicators shall be the specified colored LEDs. Separate green LED light shall indicate power. Power shall be 24 Volts VDC, regulated.

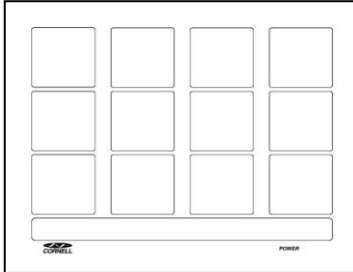
### Technical Information:

- Power Requirements: 24VDC
- Operating Environment: 50-120°F Indoor Non-condensing
- Physical Dimensions: 8.75"H x 12.25"W x 1.5"D
- Mounting: Narrow depth surface mountable frame
- Wiring: Minimum 22 AWG  
To Power: Minimum 18 AWG

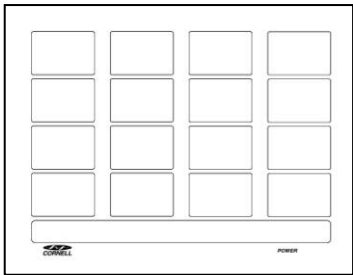
## Standard Sizes



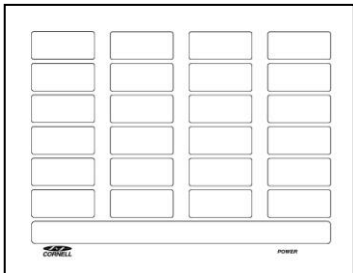
8-room Panel



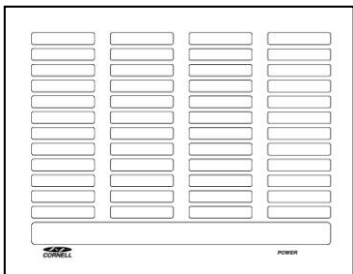
12-room Panel



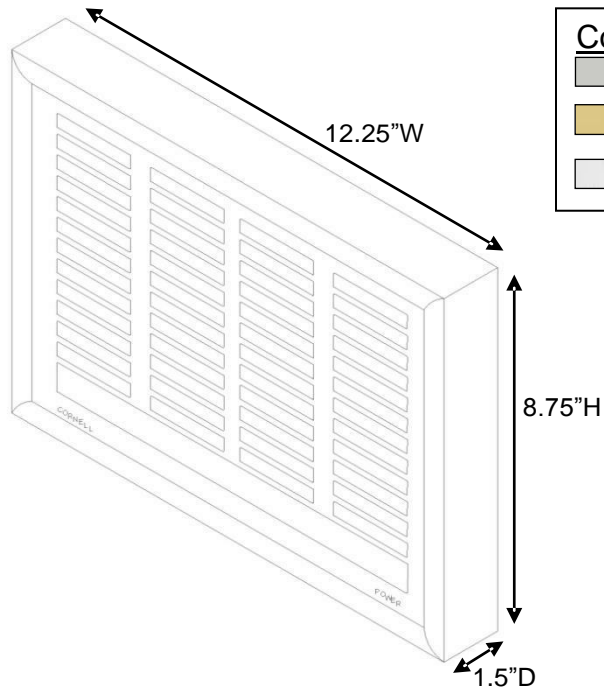
16-room Panel



24-room Panel

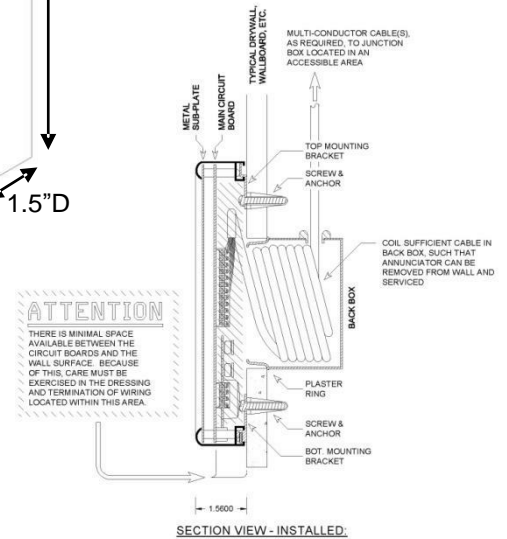


48-room Panel



## Color Options

- Brushed Silver
- Gold
- Silver



**ATTENTION**  
 THERE IS MINIMAL SPACE AVAILABLE BETWEEN THE CIRCUIT BOARDS AND THE WALL SURFACE, BECAUSE OF THIS CARE MUST BE EXERCISED IN THE DRESSING AND TERMINATION OF WIRING LOCATED WITHIN THIS AREA.

SECTION VIEW - INSTALLED

